

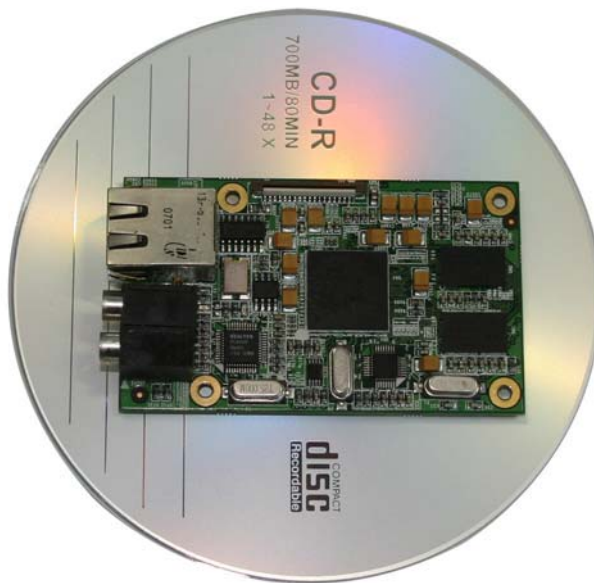
IP Module

Hikvision IP module is newly designed product, special for surveillance field. It uses Embedded Linux OS and the latest TI DaVinci DSP chip.

The IP module uses Hikvision own patent H.264 video compress algorithm and other advanced information technology.

IP module (compression board) can be embedded into analog camera and analog speed dome to build IP camera and IP dome. With chassis board, IP module also can be used as one channel network digital video server. IP module can be customized.

Current Hikvision DVR/DVS network SDK and center management software are compatible with IP module.

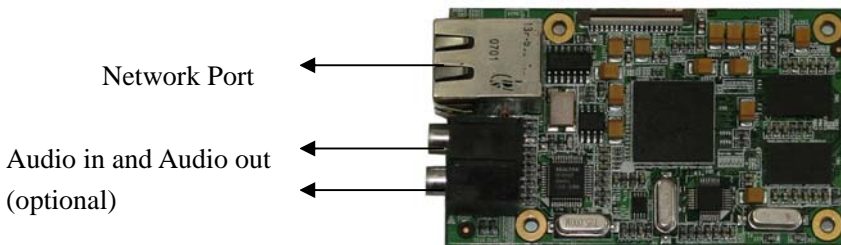
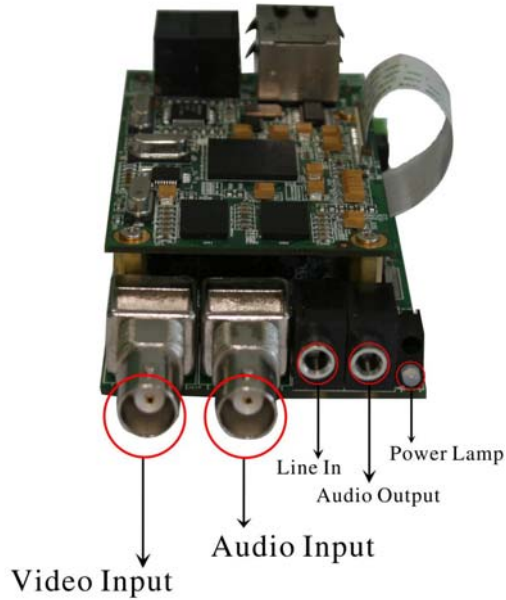
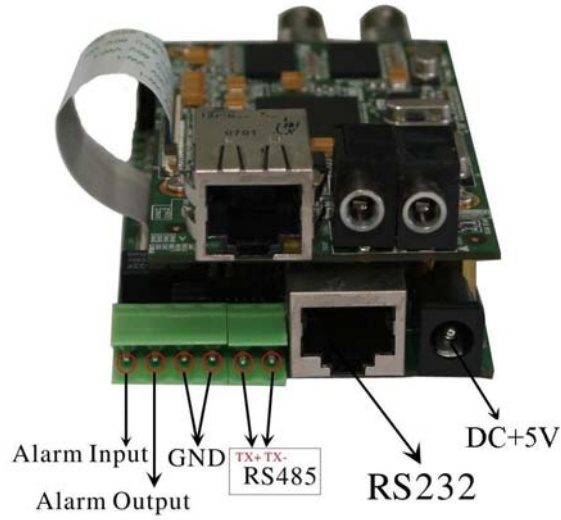


IP Module (Compression board)



Chassis board + Compression board

Physical Interface:



Features:

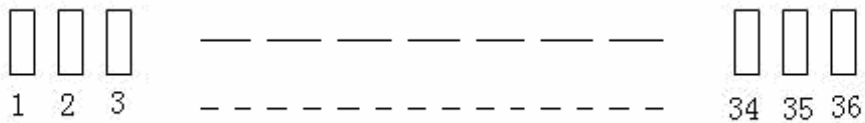
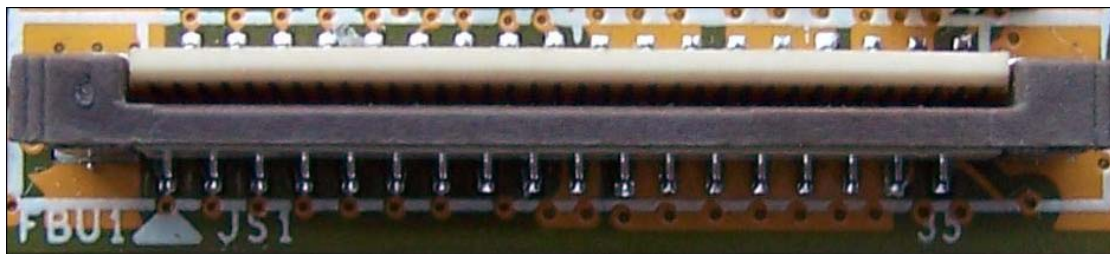
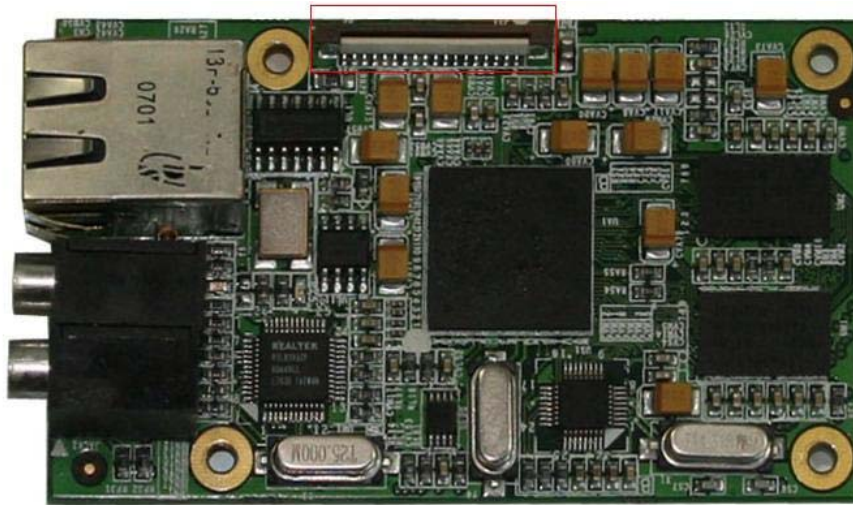
- 1 channel video input.
- 1 channel audio input.
- Support 4CIF/DCIF/2CIF/CIF/QCIF H.264 real time compression.
- Support dual H.264 compression stream.
- Support motion detection.
- Support both variable bit rate and variable frame rate.
- Support TCP, UTP, RTP, Multicast, DHCP, PPPoE and HTTP, etc.
- Support Hikvision watermark.
- Support PTZ control.
- Motion, sensor and other events can be sent to remote host center.
- Compatible with current Hikvision DVR/DVS network SDK and client software.

Specification:

Video compression	H.264
Compress resolution	4CIF/DCIF/2CIF/CIF/QCIF
Video input	CCD/CMOS/CVBS
Frame rate	PAL: 25 FPS; NTSC: 30 FPS
Audio input	1-ch BNC (2.0Vp-p 1KOhm)
Audio compression	OggVorbis 16Kbps
Audio output	1-ch RCA (Linear Electrical Level, 600Ohm)
Stream type	Video stream or Video&Audio stream
Bit rate	32Kbps~2Mbps (Self definition)
Voice talk	1-ch RCA Line in (2.0Vp-p 1KOhm)
Network	1 RJ45 10M/100M UTP network port
Serial port	1 RJ45 RS-232
PTZ control	TX+, TX- screw terminal
External alarm input	1 input
Relay output	1 output
Power supply	DC +5V
Power consumption	Less than 2.8W
Working temperature	-10°C -- +55°C
Working humidity	10%--90%
Size	Compression board: 38mm*80mm Chassis board: 53mm*94mm

PAL: 176*144(QCIF), 352*288(CIF), 704*288(2CIF), 528*384(DCIF), 704*576(4CIF);
 NTSC: 176*120(QCIF), 352*240(CIF), 704*240(2CIF), 528*320(DCIF), 704*480(4CIF).

IP Module Connector Pin Definition:



Pin No.	Pin Name	Comments
1	ALARM_OUT	I/O output
2	RXD_485	RS485 controller receive signal
3	SD-DATA0	SD Data bit0
4	TXD_485	RS485 controller send signal
5	ALARM_IN	I/O input
6	TXD	RS232 controller send signal
7	SD-DATA1	SD Data bit1
8	SD-CMD	SD control signal
9	SD-DATA2	SD Data bit2
10	RXD	RS232 controller receive signal
11	SD-DATA3	SD Data bit3
12	SD-CLK	SD clock signal
13	BCK	Bit clock output
14	SDO	Audio data output

15	LRCK	Sampling clock output
16	SDI	Audio data input
17	VIDEO_OUT	CVBS video output
18	VIDEO_IN	CBVS video input
19	5V	5V power supply input
20	1.2V	1.2V power supply input
21	GND	
22	1.2V	1.2V power supply input
23	GND	
24	1.2V	1.2V power supply input
25	GND	
26	1.8V	1.8V power supply input
27	GND	
28	1.8V	1.8V power supply input
29	GND	
30	1.8V	1.8V power supply input
31	GND	
32	3.3V	3.3V power supply input
33	GND	
34	3.3V	3.3V power supply input
35	AUDIO_IN	Audio input
36	AUDIO_OUT	Audio output